

# SITEMAP Ô

## DATA SHEET

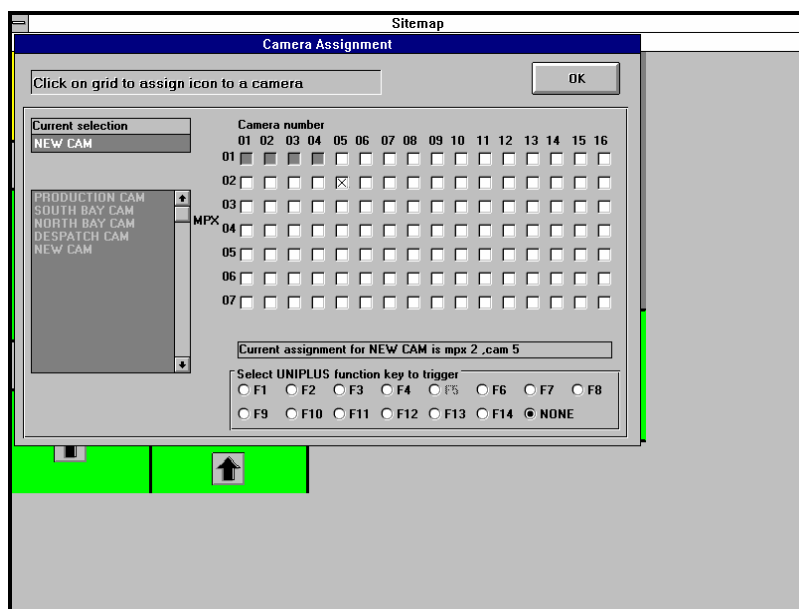
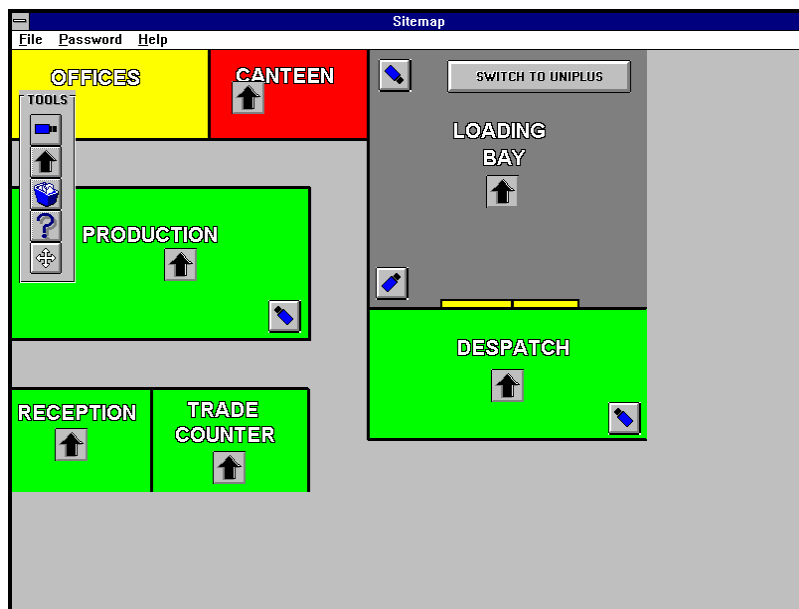
SITEMAP is a software package that provides a graphical interface for the site layout of a CCTV system when used with the 'plus' and 'studio' range of CCTV Software products.

SITEMAP allows multiple CCTV cameras to be individually designated with a location description and symbol, such as 'Car Park 3, exit 27'. Operators can then select cameras by their location and symbol rather than their system number.

SITEMAP consists of software only. It will only work in conjunction with the 'plus' or 'studio' range of multiplexer, CCTV equipment & VCR software control packages.

- ◆ SITEMAP is ideal for multicamera systems with more than one operator. New or changing operators can quickly understand systems driven by camera locations and descriptions rather than system numbers.
- ◆ Multiple system levels are possible, allowing logical system definition.
- ◆ Up to 16 cameras per "SITEMAP" screen and up to 32 "SITEMAP" screens are possible.

SITEMAP imports background pictures from standard image formats (.BMP, .WMF, .DIB) allowing quick production of layouts.



SITEMAP software can be utilised in English, French, German, Italian, Spanish, Finnish and Swedish.

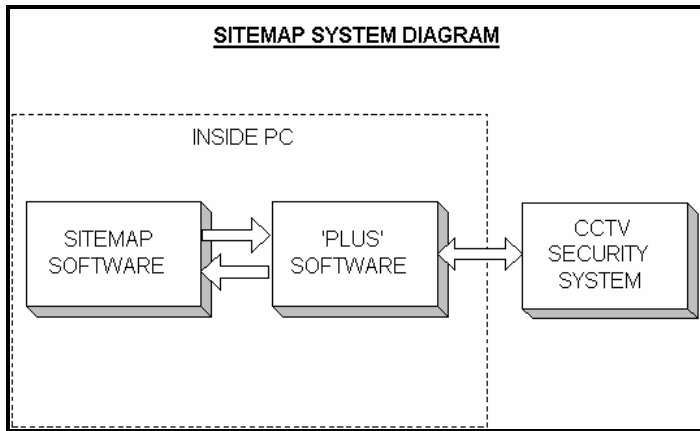
### Requirements:

- ◆ One of the 'plus' or 'studio' software products available from CCTV Software. For example Uniplus™, Tecplus™ or Multiplus™ etc.

### Options:

- ◆ PC video card: This allows the display of the multiplexer spot monitor output on the PC, reducing space requirements and saving the cost of a monitor.
- ◆ Touchscreen: PC operator control by touchscreen is possible with an optional PC monitor, further simplifying system operation.

Hardware / Software	Requirements
PC Ram	8 MB or above
PC & Display	486 66Mhz or higher with VGA or SVGA. Pentium recommended.
PC Hard drive	8 MB or above free
PC Floppy drive	3.5" 1.44MB
PC Pointing device	MS mouse, touchscreen or Compatible pointing device
PC Parallel port	1 parallel port
PC RS232 Communications ports	As required for 'plus' or 'studio' software.
PC Operating system	MS Windows 3.0 or above, Windows 95, Windows 98 2000, ME, XP or NT
CCTV Software Product Required	Links to any 'Plus' or 'Studio' Product



<b>U.K. OFFICE</b>	<b>CCTV SOFTWARE LTD</b> 37 CHAMBRES RD SOUTHPORT MERSEYSIDE PR8 6JG U.K.	<b>U.S. OFFICE</b>	<b>CCTV SOFTWARE INC</b> 10506 MAIN STREET SUITE 415 FAIRFAX VA 22030 U.S.A
<b>TEL</b>	+44 (0) 1704 548675		<a href="mailto:sales@cctvsoftware.net">sales@cctvsoftware.net</a>
<b>FAX</b>	+44 (0) 1704 548679		
<b>E-MAIL</b>	<a href="mailto:sales@cctvsoftware.co.uk">sales@cctvsoftware.co.uk</a>	<b>INTERNET</b>	<a href="http://www.cctvsoftware.com">www.cctvsoftware.com</a>
			<b>Ref:</b> DSSITEMAP 052002