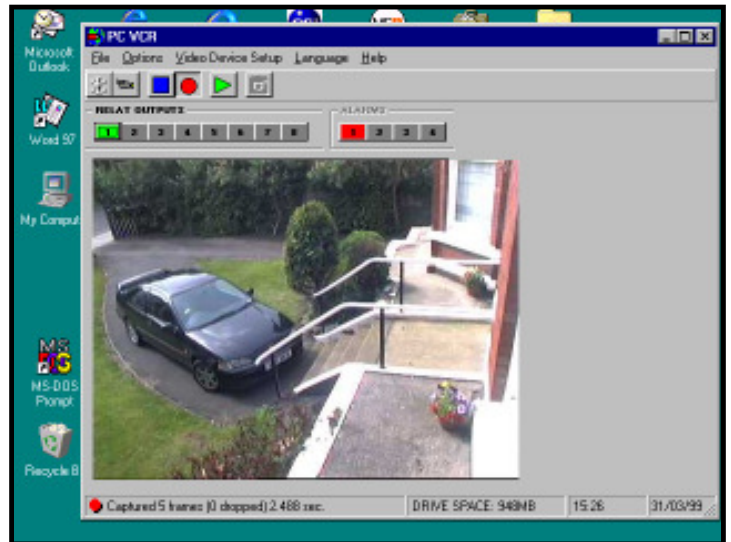
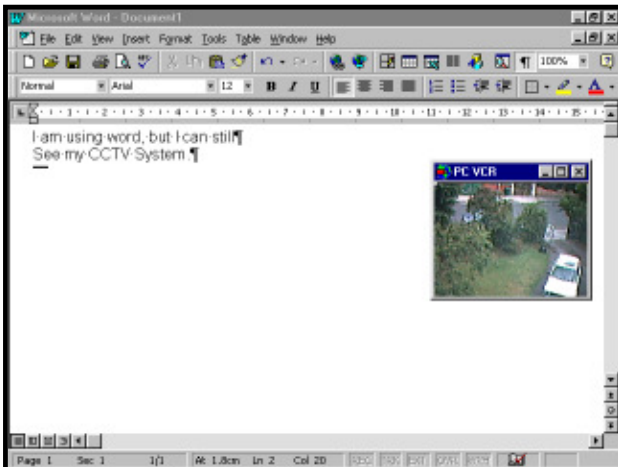


PC VCR™ DATA SHEET

PC VCR is a product by CCTV Software which enables you to view and digitally record video pictures on your PC. PC VCR is simple to set up and use requiring no specialist computer knowledge.

PC VCR consists of Windows based software and optional PC video input card or USB camera. The software can be set to record time lapse mode on hard disk, DVD, network server or any PC storage device. If an alarm trigger occurs pictures will be saved separate from the time lapse recordings.



PC VCR enables you to constantly view images from the camera, switcher or mux and records those images so that they can be found and replayed easily. PC VCR has the added advantage of being able to view stored images whilst still recording. PC VCR can also be set to keep alarm events, but repeat record over time lapse recordings after a selectable number of days.

When an intruder triggers an alarm, the PC automatically records a selectable number of pictures to the hard disk after the alarm was activated.

Pictures can be stored as .JPEG images or .AVI image sequences which are stored with a file name to indicate both the time and date. This enables you to know exactly when a particular event took place. The picture quality can be adjusted using the on screen controls and you can also choose how fast you want to record. Other options allow you to set a daily schedule to start and stop recording at different.

Viewing video over a PC Network

Viewing pictures over a PC Network or dial up Network (via phone line) is now possible using our additional software package, 'PC VCR NETWORK VIEWER'. This is achieved by sending video pictures over a TCP/IP network. Each Networked PC can view and store the images on its' own hard disk and replay them at a later date.

Email & Web Upload

PC VCR has the ability to email a picture to up to 20 email addresses. The email feature can be programmed on to the software's function keys. These can be triggered by an alarm input, keyboard, timers or on screen buttons. The email can have a JPEG imaged attached (of an alarm trigger point for example) or just a text message (ideal for mobile phone users). The web upload command can again be put into a function key and is intended for use by anyone who wants to show pictures from CCTV cameras on the internet or intranet. If users have a permanent connection to the internet is available (cable modem or DSL) then pictures will be uploaded at a specified rate or the software can be set to make a dial up connection via phone line, upload the picture and then disconnect to save on call costs.

Multiple Camera Solutions:

- 1) If you have a video multiplexer PC VCR can record the multiplexed video output by triggering a switching pulse just like a Time-lapse VCR.
- 2) To view and record multiple cameras PC VCR can control a standard video switcher via its' alarm inputs using the SOM1 relay output modules.
- 3) Some video switchers can be switched using an RS232 connection. Check our current list to see which switchers are compatible.

In all of the above cases you can pick which camera you wish to view on playback.

FEATURES:

- Alarm input/ time lapse event recording
- Record onto Hard disk/CDR/DVD.
- Save pictures to email or print/fax
- Selectable Image quality & record rates
- Low cost & easy to fit
- Play Back whilst still Recording
- Can record multiple cameras from switcher
- Selection of single camera from mux or switcher recording

Ordering Information:

PC VCR Colour with capture card
PC VCR Colour with USB Camera
PC VCR Colour software only
PC VCR Network Viewer
SOM1 four Relay Output Module
PCVCR Colour with USB capture card
Alarm Input connection cable game port
Video switch pulse cable for multiplexer

Part No.

PCVRCOL
PCVRCOL-USB
PCVRCOL-SW
PCVCRNETVIEW
SOM1
PCVRCOL-USBCAP
ALMCABLE-GAME
VIDPULSECABLE

Hardware	Requirements
PC & Display	Pentium 120MHz or higher with VGA or SVGA. Pentium 233MHz or above recommended
PC Ram	16 MB. 32 MB or above recommended
PC Hard drive	500 MB or above free. 1 GB or higher recommended.
PC Floppy drive	3.5" 1.44MB
PC Pointing device	MS mouse.
PC Parallel port	1 parallel port
PC RS232 Communications ports	One required for SOM1 Relay Output Card. One for video switch pulse output. One may be required for mouse or touchscreen.
PC Operating system	Windows 98, ME, 2000, XP or Vista
Capture card or device Required	Any device listed under CONTROL PANEL / MULTIMEDIA / DEVICES section as a video capture device. We supply PCI video capture card, USB capture card or USB video camera with software if required. DirectX8.1 or above required.
Alarm inputs	15 pin D Type in game port. Normally open or closed voltage free.
Video Switch Pulse Output	Via serial com port on PC
Video Picture Compression	JPEG or AVI. User adjustable quality
Recording Operation	Automatic start daily for Time Lapse Recording or manual start. Option to either view the live picture or log while recording. Schedule for record times.
Playback Picture Access	By date, time, or alarm. With instant search.
Playback Print Picture	Any printer under Windows.
Playback Export Picture	Export a picture as .JPG image.
PC Network Protocol	Windows TCP/IP network



U.K. OFFICE	CCTV SOFTWARE LTD 37 CHAMBRES RD SOUTHPORT MERSEYSIDE PR8 6JG U.K. TEL +44 (0)1704 548675 FAX +44 (0)1704 548679	U.S. OFFICE	CCTV SOFTWARE INC 10560 MAIN STREET SUITE 415 FAIRFAX VA 22030 U.S.A. sales@cctvsoftware.net
E-MAIL sales@cctvsoftware.co.uk		INTERNET www.cctvsoftware.com	
		Ref: DSPCVCRCOL 052002	