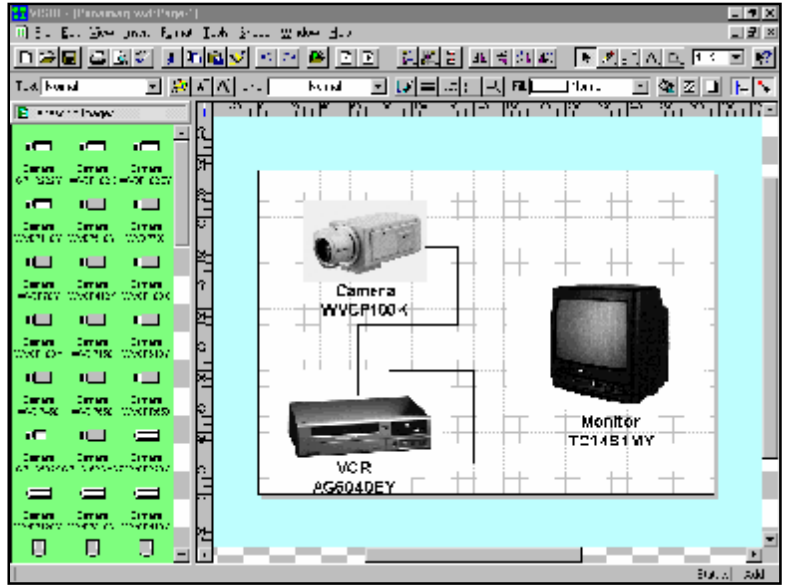


Panasonic Images

DATA SHEET

PANASONIC IMAGES is a software package designed to work with the VISIO "drag and drop" drawing package. It contains digital photographic images for all the CCTV equipment in the Panasonic product range. Each product has been digitally photographed in high resolution then converted to the Visio stencil format. This allows the images to be dragged and dropped quickly and easily on to the drawing page. PANASONIC IMAGES includes CCTV equipment such as cameras, control equipment, VCRs and monitors..

Model numbers have been assigned to each image and prices can also be assigned to allow shape reports. The shape reports calculate the cost of a drawn system and list all the separate items of equipment which is used.



The Images display an exact image of the model and can be used to produce individual data-sheets. PANASONIC IMAGES is a perfect accompaniment to our Symbols software. PANASONIC IMAGES is ideal for CCTV professionals who regularly use Panasonic equipment and want to produce quick, professional looking CCTV system drawings at low cost.

Hardware / Software	Requirements
PC & Display	486 33Mhz or higher with VGA or SVGA. Pentium recommended.
PC Ram	8 MB or above
PC Hard drive	280 MB or above free
PC Floppy drive	3.5" 1.44MB
PC Pointing device	MS mouse or Compatible pointing device
PC Parallel port and printer	1 parallel port for use with Windows compatible printer.
Visio drawing package required	VISIO 4 and above, order on part number VISIO4.0, VISIO5.0, VISIO2000 or VISIO2002
PC Graphical environment	VISIO 4.0 - MS Windows 3.1 or above VISIO 5.0, VISIO2000 - Windows 95, 98, NT or XP



U.K. OFFICE TEL FAX E-MAIL	CCTV SOFTWARE LTD 37 CHAMBRES RD SOUTHPORT MERSEYSIDE PR8 6JG U.K. +44 (0) 1704 548675 +44 (0) 1704 548679 sales@cctvsoftware.co.uk	U.S. OFFICE sales@cctvsoftware.net Ref: DSPANASONICIM 052002	CCTV SOFTWARE INC 10560 MAIN STREET SUITE 415 FAIRFAX VA 22030 U.S.A. +1 (703) 441-1111 www.cctvsoftware.com
------------------------------------------------	--------------------------------------------------------------------------------------------------------------------------------------------------------------------	-------------------------------------------------------------------------------	------------------------------------------------------------------------------------------------------------------------------------------