

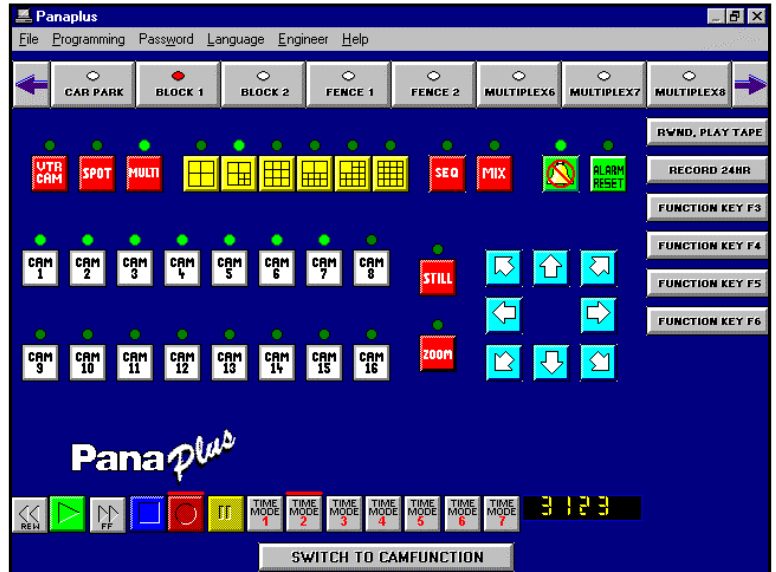
PANAPLUS™

DATA SHEET

PANAPLUS is a software package that allows PC control of certain products in a CCTV system. It is part of the "PLUS" range of software, which controls most multiplexers, digital recorders and VCRs.

PANAPLUS software specifically controls Panasonic WJ-FS616 multiplexers, WJ-HD500 digital recorders and most RS232 time lapse VCRs. It can easily be retrofitted in to an existing system.

PANAPLUS software benefits users of CCTV systems that include 1 or more multiplexers/digital recorders and 1 or more RS232 VCRs. Its unique features offer key benefits to the CCTV system user and installer.



- ♦ Automatic timers ensure potentially crucial recording operations in a CCTV system are controlled automatically, not left in the hands of operators. Key recording and equipment settings are software controlled ensuring the CCTV system records correctly at defined times and after defined events. Preventing recording errors is a crucial facility lacking in most CCTV systems.
- ♦ Using software means multiplexers/digital recorders and VCRs are not physically required on the control desk, saving space. Operators can concentrate on key tasks. Depending on system configurations, further cost savings can be made as PANAPLUS removes the requirements for multiple keyboards. Control for the whole CCTV system is in one place, on the PC.
- ♦ Example function keys containing commonly required operations are included with the software. You can also make up your own function keys contain any sequence of keystroke or operations. This means accurate and quick operator for the user, maximising the full extent of the equipments capabilities.
- ♦ Control over a computer network gives multiple users control of the CCTV system. Each PC with network control must be running Panaplus.

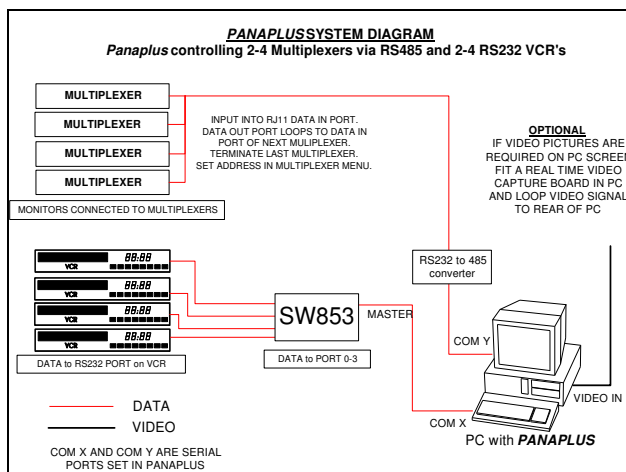
Options:

- ♦ **SITEMAP software:** This add on software package allows selection of cameras by clicking on a camera icon on a map layout. The camera icon can also trigger a function key allowing split screens or VCR functions to also be selected.
- ♦ **PC video card:** This allows the display of the multiplexer spot monitor output on the PC, reducing space requirements and saving the cost of a monitor.
- ♦ **Touchscreen:** PC operator control by touchscreen is possible with an optional PC monitor, further simplifying system operation.
- ♦ **Camfunction software :** This will add telemetry control of most popular PTZ control systems and dome cameras. It links to this software to switch cameras if required.

PANAPLUS software can be switched to English, French, German, Italian, Spanish, Swedish or Finnish.

PANAPLUS is a major breakthrough in improving the operation of CCTV systems.

Hardware / Software	Requirements
PC & Display	Pentium 166Mhz or higher with VGA or SVGA.
PC Ram	16 MB or above, check operating system requirements
PC Hard drive	8 MB or above free
PC CD Rom drive	4 x speed or faster
PC Pointing device	MS mouse, touchscreen or Compatible pointing device
PC Parallel port	1 parallel port
PC RS232 Communications ports	1 mouse / Touch Screen port. 1 serial port for every sixteen Multiplexers. 1 serial port for every seven RS232 VCR's.
PC Operating System & Network	Windows 95/98, ME, 2000, NT, XP or Vista with TCP/IP protocol for network operation
RS232 VCR's or digital recorders	mitsubishi 5600BRS/R6000S PANASONIC AG 6730/6760/6040 GYR TLC1800TDS / 2100 JVC BRS 920/925, BR9020, SR-S970, SRL910 SONY SVT-1000/S3050/5050/L230, HSR-1 SANYO TLS-2100, DTL-4800, TLS-9960 VISTA VVR-S480HR, VVR-168HR HITACHI VTL2500E/3000 PHILIPS LTC RANGE All above with RS232 option
RS485 VCR's or digital recorders	SANYO SRT-6000
Multiplexers or digital recorders	PANASONIC WJ-FS616 multiplexer



U.K. OFFICE TEL FAX E-MAIL sales@cctvsoftware.co.uk	CCTV SOFTWARE LTD 37 CHAMBRES RD SOUTHPORT MERSEYSIDE PR8 6JG U.K. +44 (0) 1704 548675 +44 (0) 1704 548679 INTERNET www.cctvsoftware.com	U.S. OFFICE CCTV SOFTWARE INC 10560 MAIN STREET SUITE 415 FAIRFAX VA 22030 U.S.A sales@cctvsoftware.net Ref: DSPANAPLUS 052002
--------------------------------------------------------------------------------------------------------------------------------------------	---------------------------------------------------------------------------------------------------------------------------------------------------------------------------------------------------------------------------------------------------------------------------	-----------------------------------------------------------------------------------------------------------------------------------------------------------------------------------------------------------------------------------------