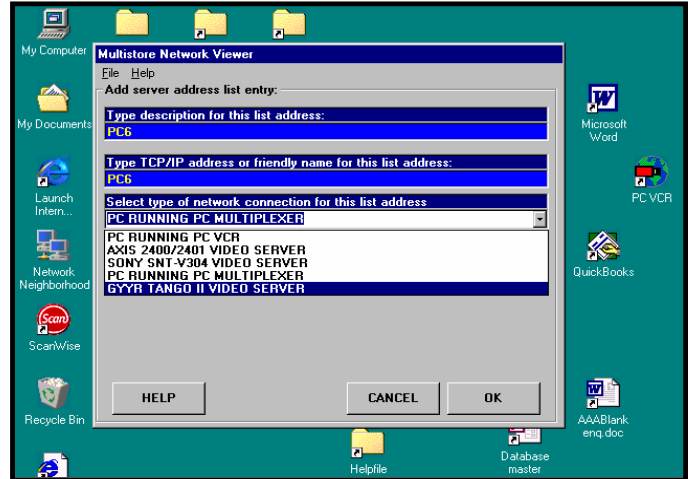


# MULTISTORE NETWORK VIEWER™

## DATA SHEET

MULTISTORE NETWORK VIEWER is a product by CCTV Software that enables you to view and digitally record video pictures over your PC network. The network connection can be a locally wired network or a dial up network. MULTISTORE NETWORK VIEWER is simple to set up and use requiring no specialist computer knowledge.

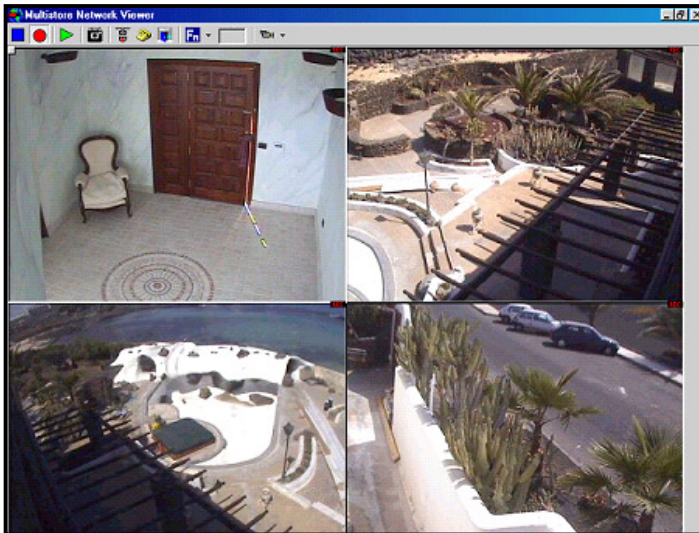
MULTISTORE NETWORK VIEWER consists of Windows based software. You will need one MULTISTORE NETWORK VIEWER for each network user who wants to see the video pictures. You will also need either PC VCR or PC Multiplexer software running on a PC, or a dedicated video server (e.g. Axis 2400/2401), connected to the same PC Network. The cameras are connected to the PC VCR PC, PC Multiplexer PC or video server and sent over the PC network to anyone connected using MULTISTORE NETWORK VIEWER to view and record the pictures.



The software can be set to record time-lapse mode on hard disk, DVD, network server or any PC storage device.

The video picture can be set to any size and can be positioned anywhere on the PC screen. Operation buttons and status information can be hidden to give just a video window on the screen with an always-on top mode to allow you to work in other software but keep an eye on the video pictures. MULTISTORE NETWORK VIEWER can be minimised but will still be recording and if an alarm trigger occurs the video picture will pop up\*.

If the software is run more than once on the PC you can get more video windows on the screen each viewing a different video connection.



When used with PC VCR or PC Multiplexer the operator can trigger function keys or relays on the SOM1 relay cards connected to PC VCR or PC Multiplexer. This allows selection of cameras (via a video switcher with alarm inputs) or operations of lights, barriers etc.

MULTISTORE NETWORK VIEWER has the added advantage of being able to play back stored images whilst still recording. The MULTISTORE NETWORK VIEWER recording does not affect or change the recording on the PC VCR server PC, PC Multiplexer PC or video server. Pictures are stored as .JPEG images which are stored with a file name to indicate both the time and date; this makes it easy to find a particular event. Other play back features include a search feature that takes you straight to the time and date you want, save image and print image.

MULTISTORE NETWORK VIEWER can be configured to receive pictures over a PSTN/ISDN telephone line. To achieve this, Windows TCP/IP Dial-Up Networking is required.

\* Works with PC VCR or PC Multiplexer only.

### FEATURES:

- View video over PC network
- Record onto Hard disk/CDR/DVD.
- Save pictures to email or print/fax
- Selectable Image quality & record rates
- Low cost & easy to install
- Play Back whilst still Recording

Hardware / Software	Requirements
PC & Display	Pentium 166MHz or higher with VGA or SVGA.
PC Ram	32 MB or above
PC Hard drive	500 MB or above free. 2 GB or higher recommended.
CD Rom drive	4x or faster
PC Pointing device	MS mouse.
PC Parallel port	1 parallel port
PC Operating system	Windows 98, ME, 2000, NT, XP or Vista
Operation requirements	<p><b>Option 1)</b> PC with PC VCR package on the same network. Cameras, video switcher and SOM1 relay cards must be fitted to the PC VCR PC for this system to work. See PC VCR datasheet for more information.</p> <p><b>Option 2)</b> PC with PC Multiplexer package on the same network. Cameras must be fitted to the PC Multiplexer PC for this system to work. See PC Multiplexer datasheet for more information.</p> <p><b>Option 3)</b> Dedicated Video Server on the same network (see below for compatible Video Servers). Cameras must be fitted to the Video Server for this system to work.</p> <p><b>One MULTISTORE NETWORK VIEWER required for each user.</b></p>
Video Picture Compression	JPEG. User adjustable quality.
Recording Operation	Record to any drive or network drive (e.g. CDR, DVD Ram, RAID) Manual start.
Playback Picture Access	By date and time. Search function available.
Playback Print Picture	Any printer under Windows.
Playback Export Picture	Export a picture as JPEG image (.JPG)
PC Network Protocol	TCP/IP Windows network.
Compatible IP cameras/Video Servers & Digital recording software	<p>PC running PC VCR software.</p> <p>PC running PC Multiplexer software. (including Ultra &amp; IP)</p> <p>Axis 2400/2401 Servers</p> <p>Axis 2400+/2401+/241S/241Q Servers</p> <p>Axis 2420/2100/2110/2120/2130/210/211/221/213/205/206/207 Cameras</p> <p>JVC VN-C1U/VN-C2U/VN-C3U/VN-C30U</p> <p>Sony SNT-V304 Server</p> <p>GYR Tango II Video Server</p> <p>Mobotix M1/M10/D10/V10 Cameras</p> <p>Sony SNC-VL10 Network Camera</p> <p>Sony SNC-R30 Network Camera</p> <p>Panasonic WV-NP472 Network Camera</p> <p>Panasonic NS320/324 Network Cameras</p> <p>Panasonic NW470/474 Network Cameras</p> <p>Panasonic BL-C10/BL-C30 Network Camera</p> <p>Panasonic BB-HCM331/BB-HCM381</p> <p>Panasonic WV-NM100 Network Camera</p> <p>Panasonic KX-HCM8/10/230/250/270/280 Network Cameras</p> <p>Panasonic WV-NS202/NS950/NW960</p> <p>Panasonic WV-NP240/NP244</p> <p>Vivotek 2000/3000/6000 Series Devices</p>

**ORDERING INFORMATION:**

- MULTISTORE NETWORK VIEWER
- SOM1 four Relay Output Module

**PART NO:**

NETVIEW  
SOM1

**MULTISTORE NETWORK VIEWER is a**



**Product**

<p><b>U.K. OFFICE</b></p> <p>CCTV SOFTWARE LTD 37 CHAMBRES RD SOUTHPORT MERSEYSIDE PR8 6JG U.K.</p> <p>TEL +44 (0)1704 548675 FAX +44 (0)1704 548679</p>	<p><b>U.S. OFFICE</b></p> <p>CCTV SOFTWARE INC 10560 MAIN STREET SUITE 415 FAIRFAX VA 22030 U.S.A. <a href="mailto:sales@cctvsoftware.net">sales@cctvsoftware.net</a></p>
<p>E-MAIL <a href="mailto:sales@cctvsoftware.co.uk">sales@cctvsoftware.co.uk</a> INTERNET <a href="http://www.cctvsoftware.com">www.cctvsoftware.com</a> Ref: NETVIEW012004</p>	

