

# Micromimic 2 DATASHEET

MICROMIMIC 2 is a software package that instantly shows an operator where an alarm/event has been activated and what actions to do next. It is essential for conveying what is happening on the alarm system to an operator and can save valuable minutes in the event of an alarm situation or emergency.

It is named after the Electronic 'Mimic' panels which used lights embedded in a map or graphic of a site to indicate alarms. By creating a software version we have improved this in hundreds of ways. Now you can change maps easily, connect to all kinds of different alarm or fire panels, change the action prompts easily and configure it specifically for each site.

All events are logged giving a valuable history of what happened in the event of an alarm.

## SETUP

MICROMIMIC 2 runs on any PC under the Windows operating system. The installer will connect it to an alarm device (see compatible equipment list) which will send the software information on which alarms have been triggered.

The installer will draw background maps which can link together to cover large buildings or areas. Information on the actions for the operator to perform when a specific alarm triggers is then assigned to each alarm input along with its priority level, type of alarm and icon design.

## OPERATION

When an alarm is triggered the MICROMIMIC 2 software will jump to the location and flash the assigned icon. The operator then has a choice of the following actions:

They can 'Silence' the alarm which silences it but keeps it active, 'Reset' which will clear the alarm or click on the text button to see text showing what they should do about the alarm e.g. 'Call local Police on 0123 45678' or 'Check Section 3 pressure valve'.

If another alarm goes off at the same time it will be automatically be selected if it has a higher priority. All currently active alarms can be viewed on an 'Map Overview' section on the right hand side of the screen.

## MAPS

The background maps used by MICROMIMIC 2 can be drawn using any art software such as paint that comes with Windows or imported from file or aerial photo etc. Acceptable formats are .bmp .wmf .ico. .dib. Each site can have 64 map locations each with up to 16 alarm icons on it.

## ICONS

We supply a very large selection of icons to use for the alarms so you will be able to find one that represents the alarm type correctly.

## INTERFACE WITH CCTV EQUIPMENT

By installing CCTV Software's CAMFUNCTION software on the same PC as MICROMIMIC 2 a link is made which means the CCTV system can react to alarms coming into MICROMIMIC 2. Check to see if your CCTV equipment is compatible with CAMFUNCTION.

## RELAY OUTPUTS

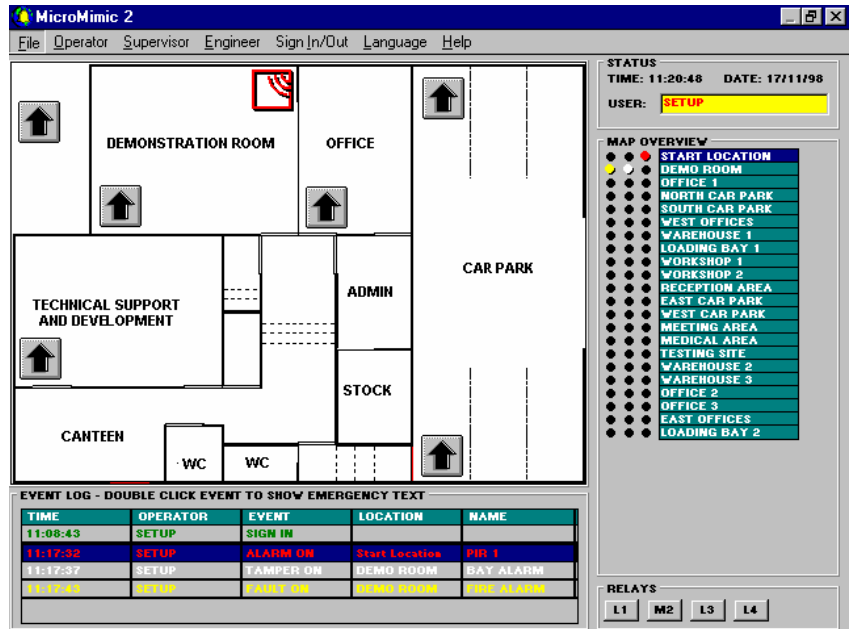
MICROMIMIC 2 can control up to 1024 relay outputs via our SOM1 relay card. Each SOM1 has 4 relay outputs and you just add as many SOM1 cards as you need. Relay outputs can be used to trigger other equipment, turn lights on, operate barriers etc.

## WANT YOUR EQUIPMENT TO INTERFACE TO MICROMIMIC 2 ?

To allow any equipment to connect to MICROMIMIC 2 we have included a device selection called 'Generic alarm protocol'. This is a protocol created by us which if you can program the alarm device to output will allow it to be interfaced to MICROMIMIC 2. The protocol can only be received via the serial port of the MICROMIMIC 2 PC. It is a very simple text protocol (A001 = alarm 1) and full details with examples are available from CCTV Software on request.

## FEATURES:

- Saves valuable seconds in emergency situations by presenting the alarm information clearly, showing where it is and what to do about it.
- Simple for Installer to setup and configure, and can be altered just as easily.
- Works with many different alarm devices and panels, and can also work with any configurable output code panel using our 'Generic alarm protocol'.



<b><u>Hardware / Software</u></b>	<b><u>Requirements</u></b>
PC & Display	Pentium 333Mhz or higher with VGA 16bit colours
PC Ram	128 MB or above
PC Hard drive	Min. 20MB of hard disk space.
PC CD Rom drive	4x speed or faster
PC Control device	Mouse/touchscreen
PC Parallel port	1 parallel port
PC RS232 Communications ports	1 mouse / touch-screen port, 1 serial port for connection of alarm device, 1 serial port for connection of Relays cards.
PC Operating System & Network	Windows 95, 98, NT, 2000, ME, XP
Compatible alarm devices  Note: New devices being added all the time call or check web site for latest list.	ASTRACOMS RADIO SPECIAL (ALARM DEVICE) CHUBB WINDSOR (VIGIL) (ALARM DEVICE) KIDDE-PROCYON (ALARM DEVICE) MICROTECH GALAXY 500 (ALARM DEVICE) NETWORK ANDROID (ALARM DEVICE) RADIO COMMUNICATIONS RDC (8102C) (ALARM DEVICE) SYSTEM 2000 (ALARM DEVICE) WINDSOR 5000 (ALARM DEVICE)  GENERIC ALARM DEVICE (MUST COMPLY TO CCTV SOFTWARE GENERIC ALARM PROTOCOL)  <i>Further models being added, please contact us for latest information.</i>
Compatible output relay card	SOM1 relay card from CCTV Software, order under part code SOM1



<b>U.K. OFFICE</b>  TEL FAX  E-MAIL <a href="mailto:sales@cctvsoftware.co.uk">sales@cctvsoftware.co.uk</a>	<b>CCTV SOFTWARE LTD</b> 37 CHAMBRES RD SOUTHPORT MERSEYSIDE PR8 6JG U.K. +44 (0)1704 548675 +44 (0)1704 548679	<b>U.S. OFFICE</b>  sales@cctvsoftware.net  Ref:MICROMIMIC0704	<b>CCTV SOFTWARE INC</b> 10560 MAIN STREET SUITE 415 FAIRFAX VA 22030 U.S.A. +44 (0)1704 548675 +44 (0)1704 548679 INTERNET <a href="http://www.cctvsoftware.com">www.cctvsoftware.com</a>
---	--	--	--