

# CENTROL DATASHEET

## (Covers IP, Standard and Pro versions)

CENTROL is a software package that allows control of multifunction dome cameras, telemetry receivers, video matrix/switchers and video recording devices using a PC. The cameras can be controlled by mouse/touchscreen via the on-screen 'joystick', PC keyboard or by a physical joystick which is connected to the PC.

CENTROL includes a map layout facility which displays a map of the premises including the location of all cameras. Simply select a camera either by using the camera select list or click one of the camera icons displayed on the map. This makes it easy for the operator to know exactly where the cameras are positioned, even if they are new to the CCTV system. 'Hot spot' icons on the map can also trigger multiple cameras in the area to turn and view specific points on the map (Ideal for following suspects in retail environments).

CENTROL also offers VCR/Digital recorder controls, allowing integration of the whole CCTV system through a single on-screen interface. This reduces the desk top space required and allows the VCR to be positioned in a secure area.

Many of the selection buttons can be titled giving the operator a clear indication of their function. This vastly reduces operator training times, as well as mistakes made by "finger trouble" on the part of operators; a common problem in security system management. You can even have up to sixteen user configurable buttons on the main operators screen to trigger function keys adding a personalisation which previously could only be achieved through expensive bespoke programming. To ensure security of the system each operator has their own password and functions available to them.

Function keys can be created to do a number of operations with a single key press. Features such as camera and preset selection, snapshot, VCR commands and tour selection can now be triggered by a keyboard or on-screen button. These function keys can also be triggered by timers at programmable times.

Images can be displayed on CCTV monitors or the PC screen when the CCTV Grab video capture card is used. When using the CCTV Grab card CENTROL has a snapshot feature which enables you to store a particular picture on to the hard disk. The software can be set to grab snapshots at selected intervals. CENTROL has a built in playback viewer which enables pictures to be printed or faxed direct from the PC or saved to floppy disk and emailed.

Control has the ability to email a picture to up to 20 email addresses. The email feature can be programmed on to the software's function keys. These can be triggered by an alarm input, keyboard, timers, map icons or on-screen buttons. The email can have a JPEG image attached (of an alarm trigger point for example) or just a text message (ideal for mobile phone users). The web upload command can again be put into a function key and is intended for use by anyone who wants to show pictures from CCTV cameras on the internet or intranet. If users have a permanent connection to the internet available (cable modem or DSL) then pictures will be uploaded at a specified rate or the software can be set to make a dial up connection via phone line, upload the picture and then disconnect to save on call costs.

Control over a computer network gives multiple users control of the CCTV system. Control is achieved by connecting the control equipment either to a PC running Central OR to a dedicated Video Server (call for list of compatible Video Servers). Additional PCs requiring network control must be running Central.

Central can interface with non CCTV equipment such as alarm panels or Access control equipment using it's 'generic alarm protocol' via an RS232 or DDE link connection. It can also accept alarm inputs direct to the PC or via compatible alarm panels.

### Central Versions

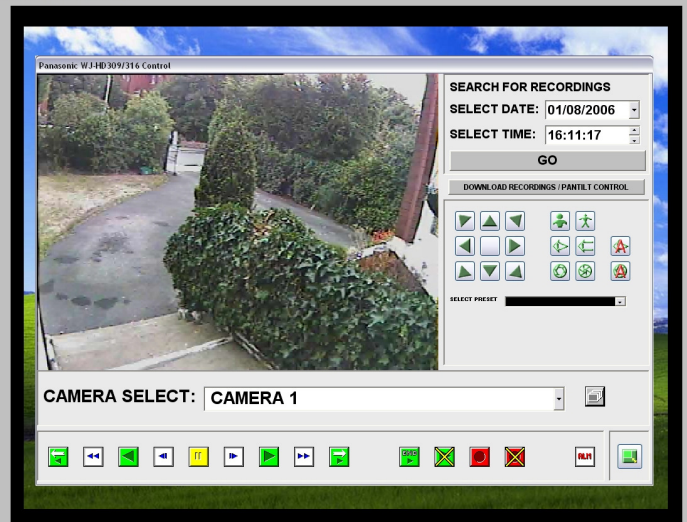
CENTROL is split into three different versions to be used in different applications:

- **Central IP-** Low cost version for multiple network users, no local port connections only network connections to cameras, video servers and NVRs / DVRs. Does not support Alarm Device functionality. Maximum of 16 IP devices.
- **Central Standard-** Version for controlling up to 32 cameras. Supports Alarm Device functionality. Will also support up to 32 IP devices. Sold with or without capture card.
- **Central Pro-** Version for controlling 33 cameras and above up to 999 cameras. Supports Alarm Device functionality. Will also support up to 999 IP devices. Sold with or without capture card.
- All versions can connect to CCTV Software's digital recording software 'PC Multiplexer' range.



Hardware / Software	Requirements
PC & Display	Pentium 3 333Mhz or higher with VGA 16bit colours and 1 spare PCI slot.
PC Ram	512 MB or above
PC Hard drive	Min. 20MB of hard disk space. 80 MB or above if using snapshots.
PC CD Rom drive	4x speed or faster, CDR or DVD-R needed for saving footage to disk.
PC Control device	Mouse/touchscreen and / or PC analogue joystick (4 buttons).
PC Hardware key port	1 parallel port or 1 USB port, add USB to part code if you want USB key
PC RS232 Communications ports	1 mouse / touch-screen port, 1 serial port for cameras, 1 serial port for VCR's, 1 serial port for video switching device
PC Operating System & Network	Windows 95, 98, 2000, ME, NT, XP or Vista with TCP/IP protocol for network operation
Compatible cameras and telemetry receivers (RS485/422 versions) New cameras being added all the time	Panasonic CSR/CPR/CLR/BLR ranges RX450/550 Rvr's Panasonic CS range <i>Further models being added, please contact us for latest information.</i>
Compatible video switching devices	Panasonic WJ-SX550 matrix, Panasonic WJ-SX650 matrix Panasonic WJ-SX150 matrix (including the SX155) Also all the DVR's & NVR's listed below can act as camera switching devices <i>Any multiplexer or equipment controllable using our other control software (e.g. 'plus' or 'studio' range).</i>
Compatible Video Servers & Network Cameras	Panasonic WV-NP472 Cameras Panasonic WV-NS320/324/202 Cameras Panasonic WV-NM100 Camera Panasonic BL-C1A/BL-C10/BL-C20/BL-C30 Camera Panasonic WV-NW470/474 Cameras Panasonic KX-HCM8/10/230/250/270/280 Cameras Panasonic BB-HCM331/BBHCM381 Panasonic WV-NS950/NW960 Panasonic WV-NP240/NP244/NP1000 Cameras & I Pro range Panasonic WJ-HD220/309/316/500 Digital Recorder ND300/400 Digital Recorder Panasonic dome cameras through compatible IP video server
Compatible RS232/RS485 VCR's and Digital Video Recorders/NVR's	All Panasonic RS232 VCR's, Panasonic WJ-HD220/309/316/500 Digital Recorder, via RS485, RS232 or IP Ethernet port WJ-HD88 via RS485 WJ-RT416 via IP Ethernet port WJ-ND300/ND400 NVR <i>Further models being added all the time, please contact us for latest information.</i>
Compatible Alarm input devices	Generic Alarm Device (Must comply to CCTV Software's 'GENERIC ALARM PROTOCOL') AC16 Alarm module (16 inputs, RS485 connection to PC) PC Game port (4 inputs) Galaxy (via RS232 port, SIA protocol) Galaxy (via IP Ethernet port, SIA protocol) Panasonic IP Alarm Protocol (DVRs/NVRs/Cameras) Vicon Matrix Alarm unit Moxa IOLogic E2200 Series Ethernet I/O Server <i>Further models being added all the time, please contact us for latest information.</i>
Compatible video capture card	CCTVGRAB card, for use with Windows 2000, ME, NT & XP. PCI slot. USB version is also available.

### DUAL MONITOR OPTION



C C T V

**CENTROL is a CENTER product**

<p><b>TEL</b> <b>FAX</b> <b>EMAIL</b> <a href="mailto:panasonic@cctvcenter.com">panasonic@cctvcenter.com</a></p>	<p>CCTV CENTER UNIT 12, LANE END IND PARK LANE END. HIGH WYCOMBE BUCKS HP14 3BY U.K. +44 (0)1494 887350 +44 (0) 1494 887350</p>	<p>Ref:CENTROL0907</p>
--	---	------------------------