

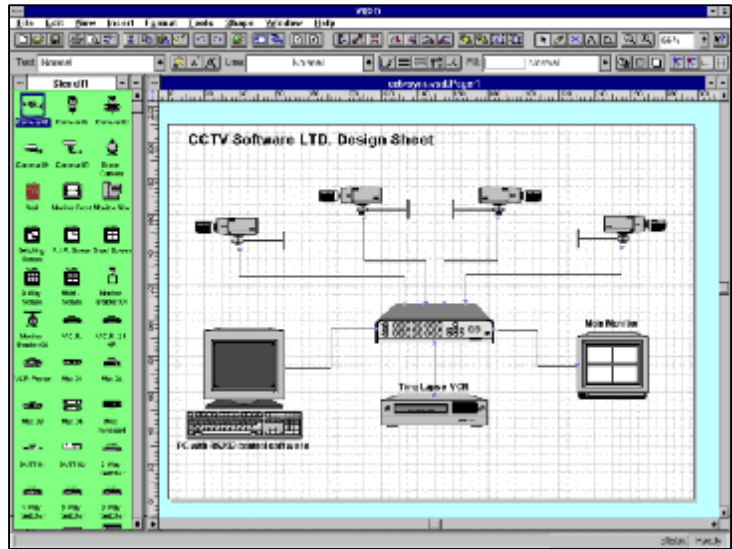
CCTV SYMBOLS[®]

DATA SHEET

CCTV SYMBOLS is a software package designed to work with any VISIO or SMARTDRAW 'drag and drop' drawing package. It contains pre-configured shapes, symbols and descriptions for all the main CCTV product areas such as cameras, housings, pan/tilts, transmission equipment, control equipment, VCRs and monitors as well as combinations of these products, such as 'outdoor PTZ camera'.

CCTV SYMBOLS is ideal for CCTV professionals who want to produce good-looking CCTV system drawings.

CCTV SYMBOLS is available in English, French, German, Italian and Spanish.



Hardware / Software	Requirements
PC & Display	486 33Mhz or higher with VGA or SVGA. Pentium recommended.
PC Ram	8 MB or above
PC Hard drive	280 MB or above free
PC Floppy drive	3.5" 1.44MB
PC Pointing device	MS mouse or Compatible pointing device
PC Parallel port and printer	1 parallel port for use with Windows compatible printer.
Drawing package required	VISIO 4 and above, order on part number VISIO4.0, VISIO5.0, VISIO2000 or VISIO2002 SMARTDRAW 5 and above.
PC Graphical environment	VISIO 4.0 - MS Windows 3.1 or above VISIO 5.0, VISIO2000 - Windows 95, 98, NT or XP SMARTDRAW - Windows 95, 98, NT or XP



U.K. OFFICE CCTV SOFTWARE LTD 37 CHAMBRES ROAD SOUTHPORT MERSEYSIDE PR8 6JG U.K. TEL +44 (0) 1704 548675 FAX +44 (0) 1704 548679	U.S. OFFICE CCTV SOFTWARE INC 10560 MAIN STREET SUITE 415 FAIRFAX VA 22030 U.S.A sales@cctvsoftware.net
E-MAIL sales@cctvsoftware.co.uk	
INTERNET www.cctvsoftware.com	
Ref: DSCCTVSYM 052002	