

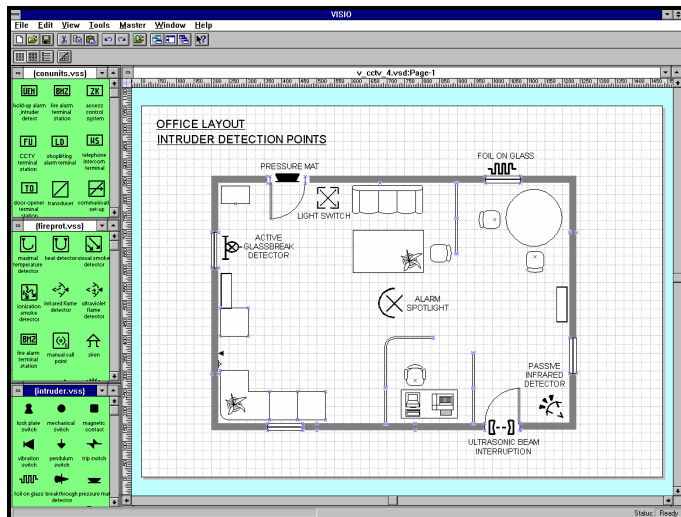
BHE SYMBOLS[®]

DATA SHEET

BHE SYMBOLS is a software package designed to work with the VISIO "drag and drop" drawing package. It contains pre-configured shapes, symbols and descriptions specifically to the standard created by the BHE organisation. BHE SYMBOLS works with Visio 4.0 and above.

BHE SYMBOLS contains symbols and descriptions for all the main security, fire, access control and intruder areas. This includes all kinds of detectors, cameras, control equipment, extinguishers and locks.

BHE SYMBOLS is ideal for security and fire professionals, designers and architects who want to produce good looking schematic diagrams to a recognised standard.



♦ See attached sheet for list of symbols included in BHE SYMBOLS.

BHE SYMBOLS is available in English and German.

Hardware / Software	Requirements
PC & Display	486 33Mhz or higher with VGA or SVGA. Pentium recommended.
PC Ram	8 MB or above
PC Hard drive	280 MB or above free
PC Floppy drive	3.5" 1.44MB
PC Pointing device	MS mouse or Compatible pointing device
PC Parallel port and printer	1 parallel port for use with Windows compatible printer.
Visio drawing package required	VISIO 4 and above, order on part number VISIO4.0, VISIO5.0, VISIO2000 or VISIO2002
PC Graphical environment	MS Windows 3.1 or above, (Visio 4.0) Windows 95, 98 or NT(Visio 5.0 & VISIO2000)



<p>U.K. OFFICE</p> <p>CCTV SOFTWARE LTD 37 CHAMBRES RD SOUTHPORT MERSEYSIDE PR8 6JG U.K.</p> <p>TEL +44 (0) 1704 548675 FAX +44 (0) 1704 548679</p>	<p>U.S. OFFICE</p> <p>CCTV SOFTWARE INC 10560 MAIN STREET SUITE 415 FAIRFAX VA 22030 U.S.A sales@cctvsoftware.net</p>
<p>E-MAIL sales@cctvsoftware.co.uk INTERNET www.cctvsoftware.com Ref:DSBHESYM052002</p>	